



Sunday 5<sup>th</sup> May  
2024

# Gungahlin Uniting Church and Community Centre

Socially and environmentally just. Welcoming of the stranger.  
Inclusive of all people. Sharing the faith journey together.  
Informal and friendly Christian community.

## Welcome to everyone who is with us today

Gungahlin Uniting Church is part of the Uniting Church in Australia.

We strive to be an open and inclusive community, welcoming people from different countries, cultures, traditions, ages, genders, gender identities, ability and viewpoints as we experience life and God together as part of our Christian faith. Gungahlin Uniting is a Christian community of people who don't pretend to know all the answers, but simply seek to follow the way of Christ. You are welcome here in this place and welcome to participate in the life of this community.

### Sunday 5<sup>th</sup> May

9:30am All Age Worship  
Lead by Rev Hugh Park

#### Bible Readings

Acts 10:44-48  
Psalm 98  
1 John 5:1-6  
John 15:9-17

### Sunday 12<sup>th</sup> May

9:30am All Age Worship with Communion  
Lead by Rev Hugh Park

#### Bible Readings

Acts 1:15-17, 21-26  
Psalm 1  
1 John 5:9-13  
John 17:6-19

## How to give to the Life & Ministry of Gungahlin Uniting Church

People can donate to the life, work, ministry and mission of GUC through organising a regular electronic transfer. Electronic transfer through UFS is anonymous.

Our electronic bank details are:

Gungahlin UC - Giving Direct  
Uniting Financial Services  
BSB: 634-634  
Account: 100034744

## Please contact us...

Phone: 6242 5001

Rev. Hugh Park is our Minister  
Alison Tweedie is our Church Life Worker  
Jenelle Martin is our Church Council Chair  
Narelle Dodd is our Safe Church &  
Volunteer Contact  
Colin Christian is our Work Health & Safety Contact

email: [minister@gungahlinuniting.org](mailto:minister@gungahlinuniting.org)  
email: [office@gungahlinuniting.org](mailto:office@gungahlinuniting.org)  
email: [chairperson@gungahlinuniting.org](mailto:chairperson@gungahlinuniting.org)  
email: [safechurch@gungahlinuniting.org](mailto:safechurch@gungahlinuniting.org)  
email: [volunteers@gungahlinuniting.org](mailto:volunteers@gungahlinuniting.org)

## Groups for you at Gungahlin Uniting

### Playgroup

For young children & parents/carers  
Wednesday 10am-12pm  
Gungahlin Uniting Church  
Contact: Cassandra 0438 423 688

### Boys' Brigade

For boys Primary/High School age  
Wednesday 6.30pm  
Gungahlin Uniting Church  
Contact: Bruce 6242 9282

### Girls' Brigade

For girls Kindergarten-Year 12  
Wednesday 6.30pm  
Gungahlin Salvation Army  
Contact: Liz 6242 9282

### Tea &Talk

Meets 1<sup>st</sup> Friday of the month -10.30am  
Gungahlin Lakes Club coffee shop  
All ages welcome  
Contact: Elizabeth Phythian 0408 624 163  
Tea &Talk is an opportunity for catching up with others from GUC over a cuppa.

### Pub Dinner Group

Relaxed conversation and meal  
Wednesday- fortnightly 7pm  
Contact: Matt Grudnoff via  
[office@gungahlinuniting.org](mailto:office@gungahlinuniting.org)

### Spice Kids

Meets 5<sup>th</sup> Sunday of the month after worship  
Contact: Jean 0428 517 595  
Meal gathering for adults  
An opportunity for conversation and friendship

### Library in the Quiet Room

There is a library of books, located in the Quiet Room, available for borrowing. Make a note in the "borrowing book" of the books taken and when they have been returned.

## Home Groups at GUC

At Gungahlin Uniting Church Home Groups give members the opportunity to gather and respond to their spiritual, social, and community needs. They are a space where people get to know each other, provide support, hospitality, and prayer and there is always lots of fun to be had. If you would like to join a Home Group please contact the Pastoral Care Team.

Shirley Williams 0418 612 656  
Jenelle Martin 0421 997 173  
Elizabeth Phythian 0408 624 163  
[pastoralcare@gungahlinuniting.org](mailto:pastoralcare@gungahlinuniting.org)

## Pastoral Care at GUC

At Gungahlin Uniting Church pastoral care encompasses the spiritual, physical, social, emotional, and mental support for members. Through providing a network of care we ensure that the expressed needs of individuals and families are attended to by a team of people. Pastoral care may include assistance with transport, meal support, a phone call, or someone visiting you at your home or in the hospital. Ways to request care:

- Contact your Home Group leader
- Call the GUC office on 6242 5001 (leave a message if necessary)
- Email the church office  
[office@gungahlinuniting.org](mailto:office@gungahlinuniting.org)
- Contact the Pastoral Care Team  
Shirley Williams 0418 612 656  
Jenelle Martin 0421 997 173  
Elizabeth Phythian 0408 624 163  
[pastoralcare@gungahlinuniting.org](mailto:pastoralcare@gungahlinuniting.org)

## Governance at GUC

GUC has a number of policies which support the safe running of the church:

- GUC Volunteer & Safe Church Policy, including the Volunteer Manual and Volunteer Code of Conduct
  - GUC Work, Health & Safety Policy
  - GUC Information Management Policy
- These can be found under the Church Resources tab on our website  
[www.gungahlinuniting.org](http://www.gungahlinuniting.org)

## Our Church at Prayer...

Inviting you to think about our own church community, the wider church, the world!

- This week we pray for Prince who has been waiting for cataract surgery for two years now. Please pray for him so he will get it done soon. Have Riyadh in your prayers for his continued recovery; and keep Jenelle in your prayers for the good recovery from her surgery. We pray for all those we know who are unwell and struggling in life at this time.
- This week we join the Canberra Region Presbytery in praying for Goulburn Uniting Church. We pray that God will guide them as they seek to call a part-time minister and that He will also guide the right person to accept the call.
- This week we join with the World Council of Churches in praying for India, Pakistan, Sri Lanka. We pray for Christians and others who selflessly work in the community, their efforts at ensuring the rights of all citizens; for efforts to build understanding and harmony among peoples across religious, caste and ethnic identities; and for leaders to keep priority on the wellbeing of the people and the earth itself amid demands for economic growth.

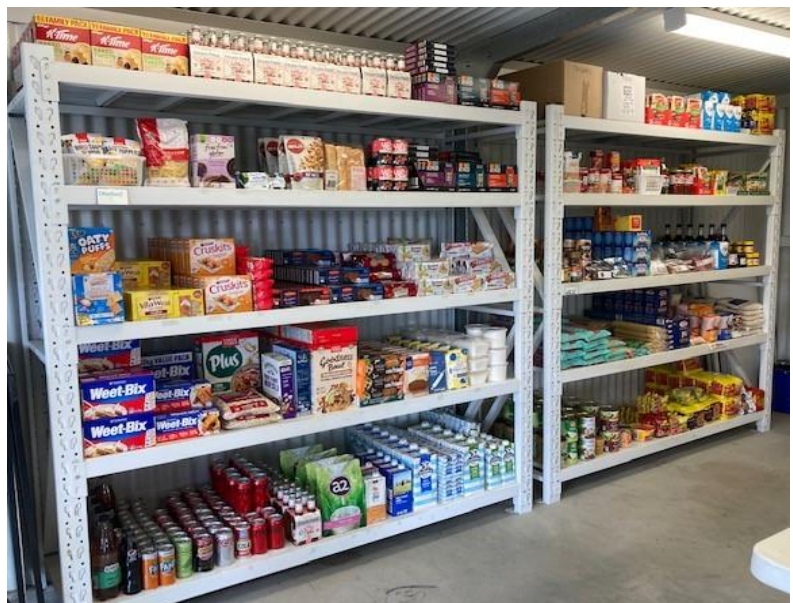
## Congregational Photo

On Sunday 24<sup>th</sup> March, a photo of the congregation was taken. As announced on the day, we plan to use this photo for promotional purposes, including on the web. If you are in the photo and you do not wish for you or your children to be visible, please either advise the people at the sound desk or email Alison, our Church Life Worker, at [office@gungahlinuniting.org](mailto:office@gungahlinuniting.org).

## Food Basket as part of our Offering

What is the basket we bring forward each week as part of our offering?

The congregation at Gungahlin Uniting has throughout its life had a basket where members can bring and leave food each week. Food that fills the basket is taken to our Food Pantry where customers come each week to get groceries. We bring the basket forward each week because the food we bring is part of our offering and part of our work as a church. Please remember the basket when you are doing your own grocery shopping. There is a flyer in the foyer with a list of useful items.



# Canberra Region Presbytery

## Position Available – Administrative Lead

The Presbytery Administrative Lead is going on maternity leave from July and we are looking for an experienced Administrator to join our team. This position will be for a 10-month contract and comes with a free carpark space and flexible work arrangements. This position can be either full time or part time for the right candidate.

The person in this role is responsible for providing organisational support to the Presbytery including secretarial, administrative and information technology support to enable the efficient and effective management of the business of the Canberra Region Presbytery.

[CLICK HERE FOR A COPY OF THE POSITION DESCRIPTION](#)

If you are interested in this role or would like to know more, please contact Alicia on (02) 6248 9311 and/or [manager@cruc.org.au](mailto:manager@cruc.org.au).

<b>May</b>	1 <sup>st</sup> Sunday 5 <sup>th</sup> May	2 <sup>nd</sup> Sunday 12 <sup>th</sup> May	3 <sup>rd</sup> Sunday 19 <sup>th</sup> May	4 <sup>th</sup> Sunday 26 <sup>th</sup> May	1 <sup>st</sup> Sunday 2 <sup>nd</sup> June
Greeters	Bec Hobson & Natalie Yule	Bec Hobson & Natalie Yule	Bec Hobson & Natalie Yule	Bec Hobson & Natalie Yule	Eric & Shirley Holm
English Bible Reader	Carina Moeller	Lynne Butson	Kanthi Fernando	Arthur Langford-Smith	Tamara Fullard-McShane
Language Bible Reader	Carina Moeller	Sumira Sheraz	Shirley Williams	Yoo-Mi Kim	Carina Moeller
Prayers for Others	Rose-Mary Faulkner-Schwartz	Jemimah Hamilton	Arthur Langford-Smith	Margaret Reeson	Alistair Buchanan
Leader	Rev. Hugh Park				
Preacher	Rev. Hugh Park				
All-Age Message	Rev. Hugh Park	Jessica Marchant	Renee Buchanan	Rev. Hugh Park	Rev. Hugh Park
Flowers	Shirley Williams	Shirley Holm	Margaret Reeson	Eric Holm	Kanthi Fernando
Sound	Chris Martin	Rob Shelton	Craig McShane	Elijah King	Chris Martin
Computer	Alistair Buchanan	Mark Phythian	Bruce Warren	Chris Martin	Alistair Buchanan
Morning Tea	Cass Nokham & Carina Moeller	Elizabeth P with Yoonhee & Sung	Eric & Shirley Holm	Vanessa Yule & Tamara F-McS	Heather Lamb & Patsy Coleman
Communion Preparation	---	Shirley Williams & Lily Ting	---	---	---
Pianist	Margaret Reeson	Margaret Reeson	Yoo-Mi Kim	Yoo-Mi Kim	Alison McKenzie
Musicians	Prince, John, Adnan, Chung	Mark, John, Adnan, Chung	Prince, John, Adnan, Chung	Mark, John, Adnan, Chung	Prince, John, Adnan, Chung
Singers	Vanessa, Rose	Jessica	Vanessa, Rose	Jessica, Rose	Vanessa
Music Practice		---	---	---	
Oasis Leader	Caroline Wallace	Caroline Wallace	Caroline Wallace	Caroline Wallace	Caroline Wallace
Billabong Leader	Elizabeth Phythian & Lynne Butson	---	Elizabeth Phythian & Lynne Butson	---	Elizabeth Phythian & Lynne Butson